

## Web technology on eComstation



### LAMP ? WAMP ? AMPOS2 !

The same way as LAMP and WAMP is often used, there is OS2/eComstation project known as AMPOS2, representing the base web technology in the world of OS2/eComstation.

There are 2 versions of AMPOS2.

1. Apache 1.3 based version – in form of Warpin archive (.WPI)
2. Apache 2.x based version - manual install/copy of packages made by Paul Smedley

Both versions can be found on Warpstock 2006 CZ DVD disk or on their respective homepages.

### Using version 2.2.x based installation

- get distributed version of Apache, MySql and PHP in ZIP format
- unzip to local disk with long names support. In this example document the `c:\programs` folder is used for binary files and `c:\home\eL\www` as `document_root`, where WWW pages and PHP scripts are stored.
- copy prepared configuration files to their correct locations and review any changes. The prepared Warpstock 2006 CZ files are setuped to reflect needed settings for Joomla! CMS. I suppose this can hold any other php dynamic scripts as well.

Settings in brief summary:

- php `save_mode` = Off
- php `memory_limit` = 32MB
- php `register_globals` = Off
- php `display_errors` = On
- php `magic_quotes_gpc` = Off
- mysql and GD extensions = On
- MySql data folder = `c:\programs\mysql\data`

Correct place for each INI files:

- PHP.INI – C:\MPTN\ETC (fixed and can not be changed ?)
- MY.INI – install folder of MySql (c:\programs\mysql)
- HTTPD.CONF – install folder of Apache2/conf (c:\programs\apache2\conf)

- setup paths in Apache2 and MySql startup.cmd scripts.
- copy modphp5.dll file from MySql\apache folder into Apache2\modules folder so Apache and php can access mysql functions.
- **modify PATH to include direction to php install folder (c:\programs\php5)**
- **restart workstation**
- run MySql and Apache2
- run web browser and try to connect to <http://localhost>.
- test php function by using test.php script using <http://localhost/test.php>

----- TEST.PHP code: -----

```
<?
phpinfo();
?>
```

-----

The php output should look like this:

<b>System</b>	OS/2 cerny.litdom01 1 2.45 i386
<b>Build Date</b>	May 24 2006 19:45:20
<b>Configure Command</b>	'./configure' '--prefix=/php5' '--enable-maintainer-zts' '--with-libxml-dir=u:/extras' '--enable-oci' '--disable-rpath' '--enable-ftp' '--enable-exif=shared' '--enable-dbase=shared' '--with-openssl=shared,u:/extras' '--with-zlib=u:/extras' '--with-jpeg-dir=u:/extras' '--with-png-dir=u:/extras' '--with-gd=shared' '--enable-gd-native-ttf' '--with-freetype-dir=u:/extras' '--with-gettext=shared' '--enable-mbstring=shared,all' '--with-curl=shared,u:/extras' '--with-mysql=shared,u:/mysql5' '--with-mysql-sock=\\socket\\MySQL' '--with-apxs2=/apache2/bin/apxs' '--with-mysqli=shared,c:/bin/mysql5/bin/mysql_config' '--with-pcre-regex=u:/extras' '--with-pgsql=shared,e:/utilities/pgsql' '--with-bz2=shared,u:/extras' '--with-pdo-sqlite=shared' '--with-sqlite=shared' '--enable-filepro=shared' '--with-pdo-mysql=shared,u:/mysql5'
<b>Server API</b>	Apache 2.0 Handler
<b>Virtual Directory Support</b>	enabled

So, AMPOS2 is working just now, we can continue to install some dynamic web application. As an example, the CMS Joomla! is used.

## List of resources and web links:

OS2 port – Paul Smedley – binary distro of PHP,  
MySql, Apache  
AMPOS2 1.3 – the wpi distro  
Apache Software Foundation  
The PHP Group  
MySql AB

[smedley.info/os2ports](http://smedley.info/os2ports)  
[www.ampos2.de](http://www.ampos2.de)  
[www.apache.org](http://www.apache.org)  
[www.php.net](http://www.php.net)  
[www.mysql.com](http://www.mysql.com)

# Installation of Joomla! CMS



Joomla! is one of the most powerful Open Source Content Management Systems. It is used all over the world for everything from simple websites to complex corporate applications. Joomla! is easy to install, simple to manage, and reliable.

It is free software released under the GPL license.

Out of the box, Joomla! does a great job of managing the content needed to make your website sing. But for many people, the true power of Joomla! lies in the **application framework** that makes it possible for thousands of developers around the world to create powerful add-ons and extensions. Here are just some examples of the hundreds of available extensions:

- Dynamic form builders
- Business or organizational directories
- Document management
- image and multimedia galleries
- E-commerce and shopping cart engines
- Forums and chat software
- Calendars
- Blogging software
- Directory services
- Email newsletters
- Data collection and reporting tools
- Banner advertising systems
- Subscription services
- and many, many more...

Simple look at some interesting extensions at [Joomla! Extensions Directory](#).

Once Joomla! is installed and running, it is simple for even non-technical users to add or edit content, update images, and to manage the critical data that makes your company or organization go. Anybody with basic word processing skills can easily learn to manage a Joomla! site.

Via a simple, browser-based interface you will be able to easily add new press releases or news items, manage staff pages, job listings, product images, and create an unlimited amount of sections or content pages on your site.

## Install steps

Installation is as much simple as possible. Just get Joomla! distribution package from download pages or from Warpstock DVD and unzip it and transfer to your web server by any ftp client. After this simple point your web browser to <http://yourwebserver>. This will will run an web based installation script. This script will ask few important settings and will populate MySql databases and creates configuration file.

So, the steps with some comments:

- Preinstall tests



The screenshot shows the Joomla! pre-installation check interface. On the left is a sidebar with a "pre-installation check" header and four steps: "license", "step 1", "step 2", "step 3", and "step 4". The main content area is titled "pre-installation check" and includes a "Next >>" button and a "Check Again" button. Below the title, it displays "Joomla! 1.0.11 Stable [ Sunbow ] 28 August 2006 20:00 UTC".

**Required Settings Check:**

If any of these items are highlighted in red then please take actions to correct them.  
Failure to do so could lead to your Joomla! installation not functioning correctly.

PHP version >= 4.1.0	Yes
- zlib compression support	Available
- XML support	Available
- MySQL support	Available
configuration.php	Writeable
Session save path	Writeable
c:\temp	

**Version Check:**

It is important to Always install the latest Stable version of Joomla!  
More information can always be found at [www.joomla.org](http://www.joomla.org)

This version of Joomla! [ 1.0.11 Stable ] is **19 days old**

**Recommended Settings Check:**

These settings are recommended for PHP in order to ensure full compatibility with Joomla!.  
However, Joomla! will still operate if your settings do not quite match the recommended

Directive	Recommended	Actual
Safe Mode:	OFF:	OFF
Display Errors:	ON:	ON
File Uploads:	ON:	ON
Magic Quotes GPC:	ON:	ON
Magic Quotes Runtime:	OFF:	OFF
Register Globals:	OFF:	OFF

First of all, some basic environment checks are done to test we meet required settings on web server. Please check if directory access rights are set right. After this click „Next“.

- GPL License agreement



pre-installation check

**license**

step 1

step 2

step 3

step 4

## license

**GNU/GPL License:**

Joomla! is Free Software released under the GNU/GPL License.

**Table of Contents**

- [GNU GENERAL PUBLIC LICENSE](#)
  - [Preamble](#)
  - [TERMS AND CONDITIONS FOR COPYING, DISTRIBUTION AND MODIFICATION](#)
  - [How to Apply These Terms to Your New Programs](#)

**GNU GENERAL PUBLIC LICENSE**

Version 2, June 1991

Copyright (C) 1989, 1991 Free Software Foundation, Inc.  
59 Temple Place - Suite 330, Boston, MA 02111-1307, USA

Everyone is permitted to copy and distribute verbatim copies of this license document, but changing it is not allowed.

[Preamble](#)

The licenses for most software are designed to take away your freedom to share and change it. By

Next >>

Joomla! is Free Software released under the GNU/GPL License.

Well, it is „something to be shown“ :-) Continue by „Next“

- Database configuration



pre-installation check

license

**step 1**

step 2

step 3

step 4

## step 1

**MySQL database configuration:**

Setting up Joomla! to run on your server involves 4 simple steps...

Please enter the hostname of the server Joomla! is to be installed on.

Enter the MySQL username, password and database name you wish to use with Joomla!.

Enter a table name prefix to be used by this Joomla! install and select what to do with existing tables from former installations.

Install the sample data unless you are an experienced Joomla! User wanting to start with a completely empty site.

Host Name  *This is usually 'localhost'*

MySQL User Name  *Either something as 'root' or a username given by the hoster*

MySQL Password  *For site security using a password for the mysql account is mandatory*

MySQL Database Name  *Some hosts allow only a certain DB name per site. Use table prefix in this case for distinct Joomla! sites.*

MySQL Table Prefix  `jos_`

Drop Existing Tables

Backup Old Tables *Any existing backup tables from former Joomla! installations will be replaced*

Install Sample Data *Don't uncheck this option unless you are experienced in using Joomla!*

Next >>

Joomla! is Free Software released under the GNU/GPL License.

This is the **most important page to fill in!** Please be careful and check if all items are correct, otherwise the install process will not prepare MySQL database tables and will fall!

- Name of the site (e.g. Warpstock CZ 2006 Joomla! site)



pre-installation check

license

step 1

**step 2**

step 3

step 4

**step 2**

**step 2**

**Next >>**

**Enter the name of your Joomla site:**

SUCCESS!

Type in the name for your Joomla site. This name is used in email messages so make it something meaningful.

Site name:  e.g. The Home of Joomla

Joomla! is Free Software released under the GNU/GPL License.

This name will be added to front page as Title.

- Physical paths on server, email for administrator and password



pre-installation check

license

step 1

step 2

**step 3**

step 4

**step 3**

**Next >>**

**Confirm the site URL, path, admin e-mail and file/directory chmods**

If URL and Path look correct then please do not change them. If you are not sure then please contact your ISP or administrator. Usually the values displayed will work for your site.

Enter your e-mail address, this will be the e-mail address of the site SuperAdministrator.

The permission settings will be used while installing Joomla itself, by the Joomla add-on installers and by the media manager. If you are unsure what flags shall be set, leave the default settings at the moment. You can still change these flags later in the site global configuration.

URL:

Path:

Your E-mail:

Admin password:

File Permissions:

Dont CHMOD files (use server defaults)

CHMOD files to:

Directory Permissions:

Dont CHMOD directories (use server defaults)

CHMOD directories to:

Joomla! is Free Software released under the GNU/GPL License.

Be careful to remember your administrator password. After installation an default user name „admin“ with password you choose will be created.

- Finishing installation



pre-installation check


license

step 1

step 2

step 3

**step 4**

 **step 4**

**View Site** **Administration**

**Congratulations! Joomla is installed**

Click the "View Site" button to start Joomla site or "Administration" to take you to administrator login.

**PLEASE REMEMBER TO COMPLETELY REMOVE THE INSTALLATION DIRECTORY**


Administration Login Details

**Username : admin**  
**Password : asdf**

Joomla! is Free Software released under the GNU/GPL License.

OK, good end at all ! We have successfully installed Joomla! at web server and check if it is running. You can go to front end or administration backend from here.

- First run



**Joomla!™**

**Joomla! WS 2006 CZ Test site**

**For your security please completely remove the installation directory including all files and sub-folders - then refresh this page**

When connecting to site for the first time, some security notice is shown. So please do not forget to delete install folder from web server otherwise install script can be run manually to attack/corrupt your website configuration!



- First look after installation. The basic template with sample data.

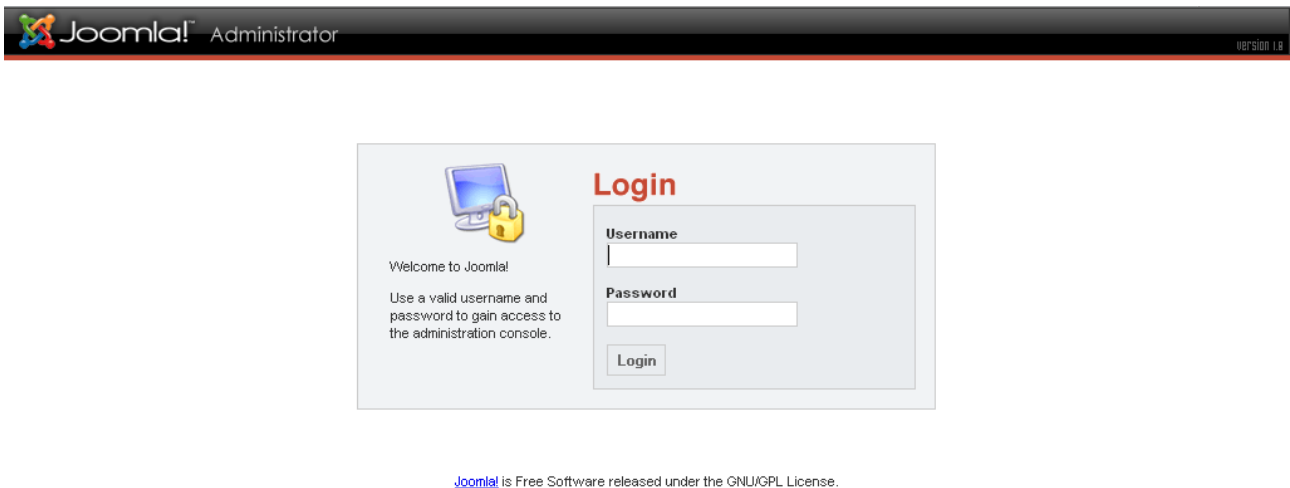
Home	Contact Us	News	Links	search...
				<p>NEWSFLASH</p> <p>Yesterday all servers in the U.S. went out on strike in a bid to get more RAM and better CPUs. A spokes person said that the need for better RAM was due to some fool increasing the front-side bus speed. In future, busses will be told to slow down in residential</p>
<p>MAIN MENU</p> <ul style="list-style-type: none"> <li>Home</li> <li>Joomla! License</li> <li>News</li> <li>Blog</li> <li>Links</li> <li>Contact Us</li> <li>Search</li> <li>News Feeds</li> <li>FAQs</li> <li>Wrapper</li> <li>Joomla! Home</li> <li>Joomla! Forums</li> <li>OSM Home</li> <li>Administrator</li> </ul>		<p>ADVERTISEMENT</p> <p>OpenSourceMatters home of Joomla!</p>		<p>Powered by</p>  <p>version 1.0</p>
		<p>LATEST NEWS</p> <ul style="list-style-type: none"> <li>Newsflash 1</li> <li>Newsflash 2</li> <li>Newsflash 3</li> <li>Example News Item 2</li> <li>Example News Item 4</li> </ul>	<p>POPULAR</p> <ul style="list-style-type: none"> <li>Example FAQ Item 2</li> <li>Example FAQ Item 1</li> <li>Example News Item 4</li> <li>Example News Item 1</li> <li>Example News Item 2</li> </ul>	<p>POLLS</p> <p><b>This Joomla! installation was ....</b></p> <ul style="list-style-type: none"> <li><input type="radio"/> Absolutely simple</li> <li><input type="radio"/> Reasonably easy</li> <li><input type="radio"/> Not straight-forward but I worked it out</li> <li><input type="radio"/> I had to install extra server stuff</li> <li><input type="radio"/> I had no idea and got my friend to do it</li> <li><input type="radio"/> My dog ran away with the README ...</li> </ul> <p><input type="button" value="Vote"/> <input type="button" value="Results"/></p>
<p>LOGIN FORM</p> <p>Username admin</p> <p>Password *****</p> <p><input type="checkbox"/> Remember me</p> <p><input type="button" value="Login"/></p> <p><b>Lost Password?</b> No account yet? <b>Register</b></p>		<p>Home</p> <p><b>Welcome to Joomla!</b></p> <p>Written by Web Master Saturday, 12 June 2004</p> <p>If you've read anything at all about Content Management Systems (CMS), you'll probably know at least three things: CMS are the most exciting way to do business, CMS can be really, I mean <i>really</i>, complicated and lastly Portals are absolutely, outrageously, often <i>unaffordably</i> expensive.</p> <div style="display: flex;"> <div style="flex: 1;">  <p>Example Caption</p> </div> <div style="flex: 2;"> <p>Joomla! is set to change all that ... Joomla! is different from the normal models for portal software. For a start, it's not complicated. Joomla! has been developed for the masses. It's licensed under the GNU/GPL license, easy to install and administer and reliable. Joomla! doesn't even require the user or administrator of the system to know HTML to operate it once it's up and running.</p> </div> </div> <p>Last Updated ( Saturday, 12 June 2004 )</p> <p><b>Read more...</b></p> <div style="display: flex;"> <div style="flex: 1;"> <p><b>Newsflash 1</b></p> <p>Written by Administrator Monday, 09 August 2004</p> <p>Joomla! 1.0: 'Experience the Freedom!' It has</p> </div> <div style="flex: 1;"> <p><b>Newsflash 2</b></p> <p>Written by Administrator Monday, 09 August 2004</p> <p>Yesterday all servers in the U.S. went out on</p> </div> </div>		
<p>WHO'S ONLINE</p>				

## Some basic administration steps

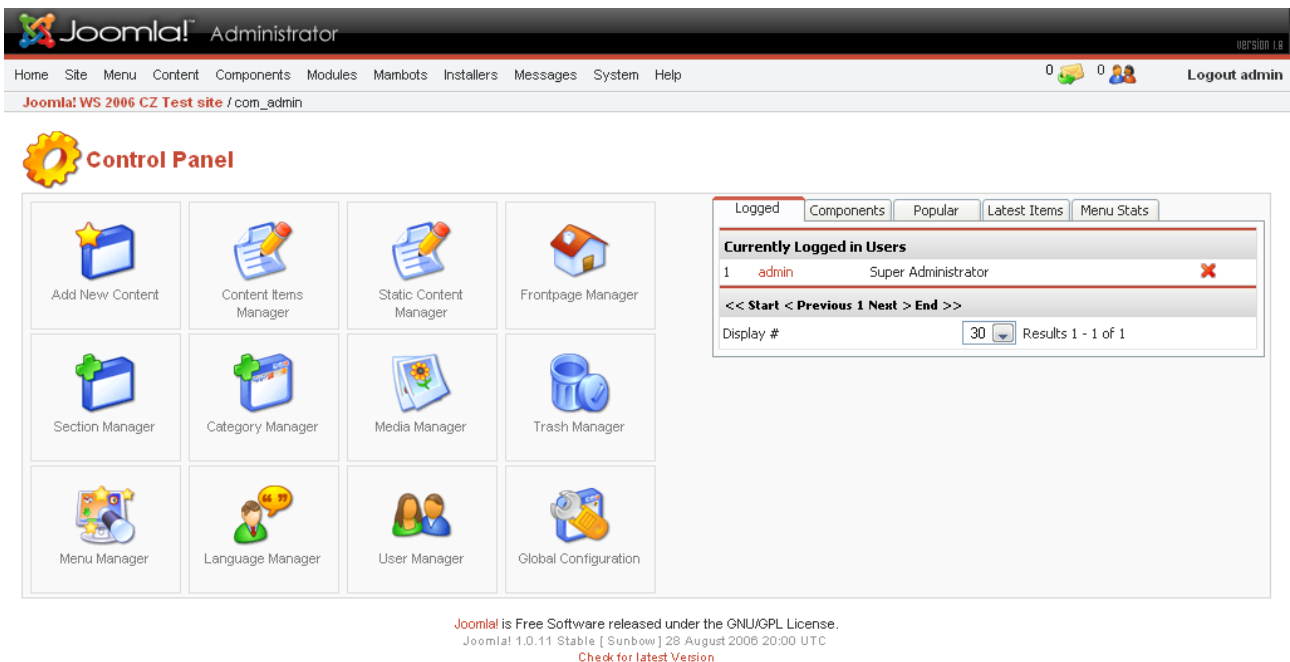
After successful install, some basic administration steps are welcome to be done. e.g. localization, new WYSIWYG editor, locale settings, mass emailing, changing of template ...

For all administration steps, the special backend part of Joomla! is used. Please force your web browser to <http://yourwebservice/administrator> and logon to backend as user „admin“ with password used during install process.

- Backend logon screen



After logon, easy menu driven system to administer is shown. As next we will look at some Global Configuration options and install czech localization files and some new WYSIWYG editor.



## Localization

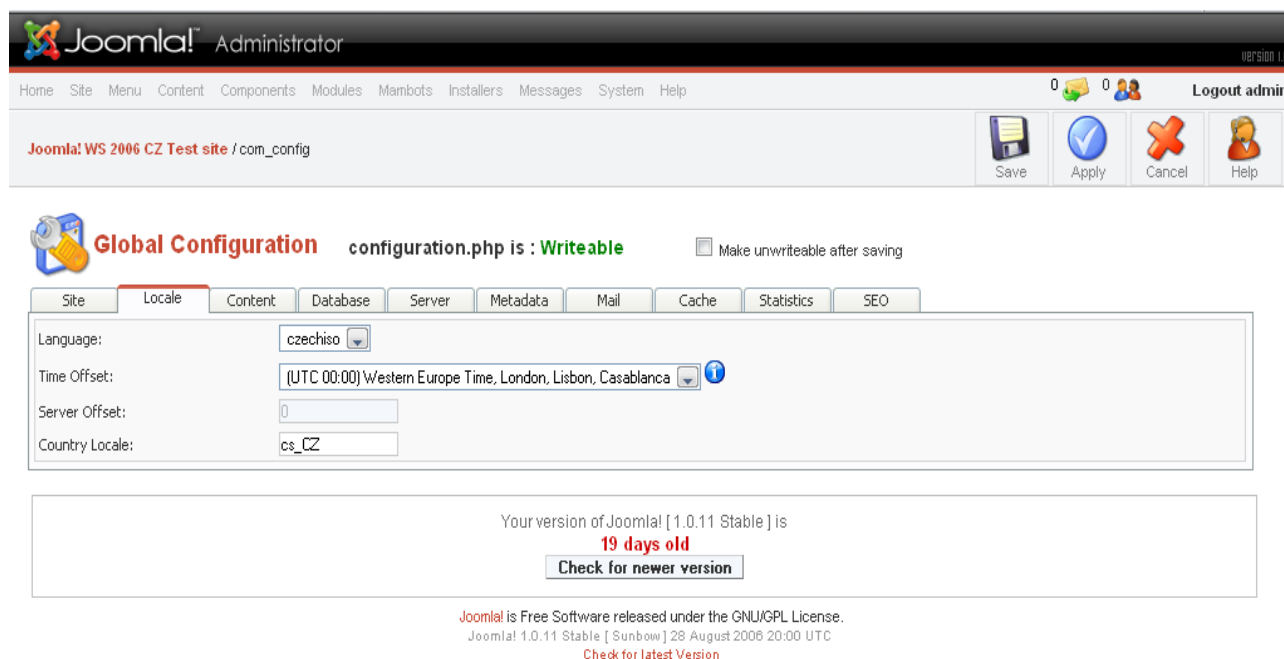
To support non-english locale, the Joomla! Czech team builds Windows-1250, iso-8859-2 and UTF8 packages. You can find them on WS DVD or at [www.joomla.cz](http://www.joomla.cz). These files have to be uploaded to /language folder on web server. For each specific OS, the correct character code is suggested.

OS	WWW character coding	Joomla! file
Windows	Win-1250	czech1250
Linux	iso-8859-2, utf8	czechiso, czechutf8
OS2/eCS	iso-8859-2	czechiso

So unzip Joomla-CZ-1.0.9-all\_enc.zip file and copy correct Joomla! localization files to web server to /language folder using any FTP client software. After this change settings in „Global Configuration – tab „Locale“. Choose correct localization file and setup „Country locale“ string so reflect date/time display preferences as follows

Character coding	Country locale format
ISO, Win1250	cs_CZ
UTF8	cs_CZ.utf-8
Win1250 on some servers	czech

You can also setup default language for whole website by „Language Manager“. Select language and click „Publish“.



The screenshot shows the Joomla! Administrator interface. At the top, the Joomla! logo and 'Administrator' title are visible. Below the navigation menu, the current page is identified as 'Joomla! WS 2006 CZ Test site / com\_config'. The 'Global Configuration' section is active, with the 'Locale' tab selected. The configuration fields are as follows:

- Language: czechiso
- Time Offset: (UTC 00:00) Western Europe Time, London, Lisbon, Casablanca
- Server Offset: 0
- Country Locale: cs\_CZ

Below the configuration fields, a message states: 'Your version of Joomla! [ 1.0.11 Stable ] is 19 days old' with a 'Check for newer version' button. At the bottom, the Joomla! license information is displayed: 'Joomla! is Free Software released under the GNU/GPL License. Joomla! 1.0.11 Stable [ Sunbow ] 28 August 2006 20:00 UTC' with a 'Check for latest Version' link.

**Language successfully changed! czechiso**

### Language Manager [ Site ]

#	Language	Published	Version	Date	Author	Author Email
1	Czech/řesky (ISO 8859-2)	✔	1.0.8	02/22/2006	Official Czech Translation Team	admin@oomlaportal.cz
2	English		1.0.0	2004-09-20	Joomla! Project	admin@joomla.org

<< Start < Previous 1 Next > End >>  
 Display #  Results 1 - 2 of 2

Joomla! is Free Software released under the GNU/GPL License.  
 Joomla! 1.0.11 Stable [ Sunbow ] 28 August 2006 20:00 UTC  
[Check for latest Version](#)

After this two steps, all internal strings are transferred to czech language as shown on following picture:

**LOGIN FORM**

Uřivatelské jměno

Heslo

Zapamatovat

**Přihlášeni**

**Zapomenuté heslo**  
Nemáte účet? **Vytvořte jej!**

**LOGIN FORM**

Username

Password

Remember me

**Login**

**Lost Password?**  
No account yet? **Register**

## WYSIWYG editor for international content

Out-of-the-box, Joomla! can store any character coded content but in some cases, national characters are transformed into its entities. This can make problems with PDF or Export/Import. There is good free component/mambot for Joomla! which can solve this. It is called JCE. You can find this on DVD or on extensions.joomla.org website.

It have to be installed in two steps:

1. component part (configuration tool)
2. mambot part (editor itself)

Installation is done by „Installers / Components“ menu. This opens installation dialog. Simple browse directory on local workstation where the com\_jce ZIP file is stored and click „Upload and install“ button



## Install new Component

### Upload Package File

Package File: D:\WS2006\Joomla\Plugins\JCE\com\_jce104.zip

[Procházet...](#)

[Upload File & Install](#)

### Install from directory

Install directory: C:\www\joomla\administrator\components\com\_installer\component

[Install](#)

media/ **Writeable**  
 administrator/components/ **Writeable**  
 components/ **Writeable**  
 images/stories/ **Writeable**



## Installed Components

Currently Installed	Component Menu Link	Author	Version	Date	Author Email	Author URL
		Joomla! Project	1.0.0	July 2004	admin@joomla.org	www.joomla.org

## Joomla! Administrator

Home Site Menu Content Components Modules Mambots Installers Messages System Help

Joomla! WS 2006 CZ Test site / com\_installer / uploadfile



## Upload component - Success

### JCE

#### JCE Administration Component version 1.0.4

#### Changelog (from 1.0.3)

- Added check for Editor Mambot when accessing Plugin Manager, Layout Manager, Language Manager.

#### Changelog (from 1.0.2)

- Fixed advlink\_favourites table uninstall error.
- Added underscore to space conversion in jce.php for popup support.

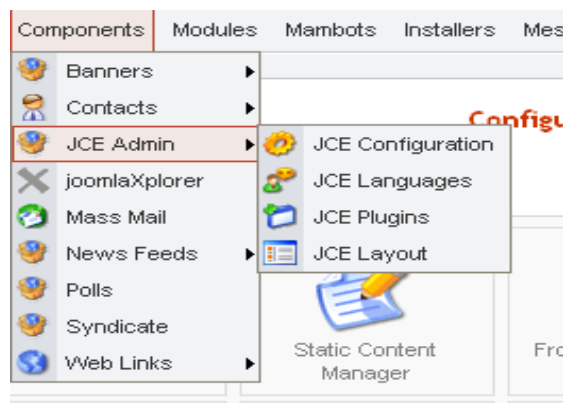
#### Changelog (from 1.0.1)

- Removed favourites db install
- Added Format Select Command
- Added new popup image code to support changes to Image Manager popups.
- Reorganised Language Manager buttons.
- Removed unused Apply button in Plugin Manager.

[ [Continue ...](#) ]

Joomla! is Free Software released under the GNU/GPL License.  
 Joomla! 1.0.11 Stable [ Sunbow ] 28 August 2006 20:00 UTC  
[Check for latest Version](#)

The JCE Administration component was successfully installed. Click „Continue“. Repeat the same with Mambot part of editor. Use „Installers / Mambots“ menu to install JCE editor itself. After this new item of JCE Admin appears in Components menu. It is used for changing settings of JCE editor.



At this point we should go to JCE Admin / JCE Configuration and turn off the entities transformation.

### Site Mambot: Edit [ JCE Editor Mambot ]

Mambot Details	Parameters
Name: JCE Editor Mambot	-
Folder: editors	Editor Width: 500
Mambot file: jce.php	Editor Height: 600
Mambot Order: 0 (JCE Editor Mambot)	Compressed Version: <input checked="" type="radio"/> Off <input type="radio"/> On
Access Level: Public Registered Special	Convert URLs: <input checked="" type="radio"/> Yes <input type="radio"/> No
Published: <input type="radio"/> Ne <input checked="" type="radio"/> Ano	Entity Encoding: Raw
Description: JCE Editor Mambot, version 1.0.4 Changelog (from 1.0.3) • Fixed saving of parameters. • Added Font Size Type selection(eg: pt or absolute). Changelog (from 1.0.2) • Fixed Convert Urls error.	Text Direction: Left to Right
	Convert Fonts to Spans: <input type="radio"/> No <input checked="" type="radio"/> Yes
	Font Size Type: Length

To turn off entities please choose „Entity Encoding“ and set it to „Raw“. Save new settings by „Save“ button.

Last step of localization is to set JCE editor as default system editor. It is done in „Global Configuration“. Choose „SITE“ tab and choose „Default WYSIWYG Editor“ from pull-down menu.

Frontend Login:	<input type="radio"/> Ne <input checked="" type="radio"/> Ano
Frontend User Params:	<input type="radio"/> Ne <input checked="" type="radio"/> Ano
Debug Site:	<input checked="" type="radio"/> Ne <input type="radio"/> Ano
Default WYSIWYG Editor:	JCE Editor Mambot
List Length:	30
Favourites Site Icon:	favicon.ico

Joomla! is Free  
1.5.1.4.8

## JCE Plugins

The great things about JCE is the modular structure. This means JCE itself can be extend by various plugins. One of my favorite is Image Manager. This plugin makes the process of inserting images to content more easy so lets install this ... You can find this on DVD or homepage. Simple go to „Components / JCE Admin / JCE Plugins“.

Joomla! Administrator

Home Site Menu Content Components Modules Mambots Installers Messages System Help

Joomla! WS 2006 CZ Test site / com\_jce / showplugins

Publish Unpublish New Install Layout Access Cancel

**JCE Správce doplňků [ Site ]**

Filtr:  - Select Type -

Seznam oprávnění: Select Access Level

#	<input type="checkbox"/>	Jméno	Publikováno	Cíl	Pořadí	Úroveň přístupu	System	Typ	Ikona	Plugin/Befehl
1	<input type="checkbox"/>	Context Menu	✘	0	0	Registered	Yes	plugin		contextmenu
2	<input type="checkbox"/>	Undo	📄	1	1	Registered	Yes	command	↶	undo
3	<input type="checkbox"/>	Redo	📄	1	2	Registered	Yes	command	↷	redo
4	<input type="checkbox"/>	Help	📄	1	3	Registered	Yes	command	🔗	help
5	<input type="checkbox"/>	New Document	📄	1	4	Registered	Yes	command	📄	newdocument

Then use „Install“ to upload new JCE internal plugin. The install dialog looks like previous one and you have to browse ZIP file with plugin and select „Upload and Install“.

Joomla! Administrator

Home Site Menu Content Components Modules Mambots Installers Messages System Help

Joomla! WS 2006 CZ Test site / com\_jce / install

Plugins Uninstall Cancel

**Instalovat nový JCE doplněk**

**Upload jazykového balíčku**

Upload souboru: D:\WS2006\Joomla\Plugins\JCE\jce\_imgmanager104.zip

**Instalovat ze složky**

Složka pro instalaci: C:\www\joomla\administrator\components\com\_jce\installer\plugins

mambots/editors/jce/scripts/tiny\_mce/plugins/ **Writable**

**Installed JCE Plugins**

Zobrazeny jsou pouze doplňky, které lze odinstalovat. Systémové komponenty odinstalovat nelze a nejsou v seznamu

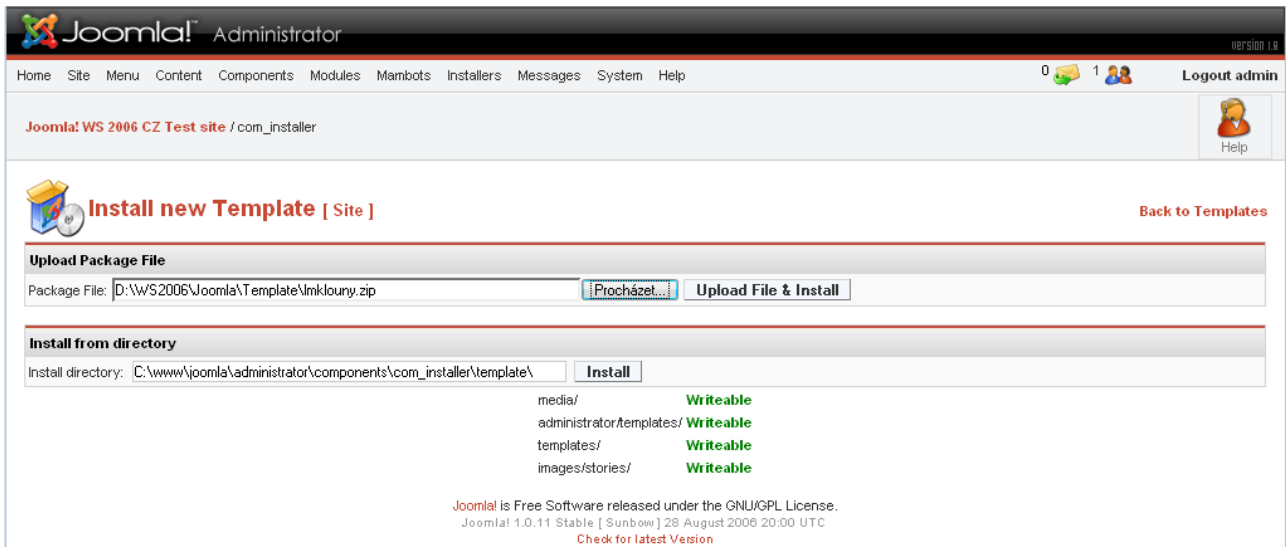
Žádné další instalované doplňky

Joomla! is Free Software released under the GNU/GPL License.  
 Joomla! 1.0.10 Stable [Sundown] 26 June 2006 00:00 UTC  
[Check for Latest Version](#)

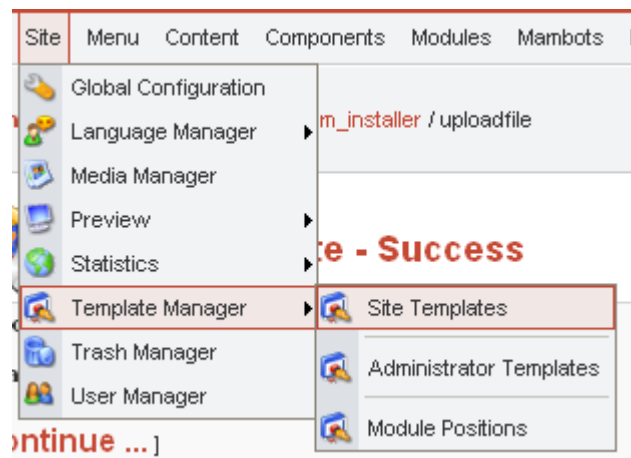
## Visual styling - templates

Joomla! uses template system to present content data to web browser. This means user can easily change style of website without changing any database data. Template are sets of HTML, CSS, PHP and graphics. User can use any of HTML editors to build his own template or simply ask Mr. Google for „joomla templates“ :-)

Templates are installed by „Installers / Site Templates“ menu in backend. So get your new, nice template and browse its location on local workstation and click „Upload and install“.



After installation, the new template has to be assign in „Site / Template Manager / Site Templates.





Choose name of the new template and click „Default“ to publish this template as style of website.

**Template Manager [ Site ]** Preview Template

#	Name	Default	Assigned	Author	Version	Date	Author URL
1	lmklouny	<input checked="" type="checkbox"/>		Mambosolutions + LMK Louny	1.0.0	06/06/2006	www.lmklouny.net
2	madeyourweb	<input type="checkbox"/>		Marc Hinse	1.3	15 09 2005	http://www.madeyourweb.com
3	rhuk_solarflare_ji	<input type="checkbox"/>		rhuk	2.2	10/20/05	http://www.rocketheme.com

<< Start < Previous 1 Next > End >>  
 Display #  Results 1 - 3 of 3

Joomla! is Free Software released under the GNU/GPL License.  
 Joomla! 1.0.11 Stable [ Sunbow ] 28 August 2006 20:00 UTC  
[Check for latest Version](#)

When you visit homepage of your site now, its look should také new look and style.

[Home](#) [Joomla! License](#) [News](#) [Blog](#) [Links](#) [Contact Us](#) [Search](#) [News Feeds](#) [FAQs](#) [Wrapper](#)

**LETECKOMODELÁŘSKÝ KLUB LOUNY**

Home

**Latest News**

- Newsflash 1
- Newsflash 2
- Newsflash 3
- Example News Item 2
- Example News Item 4

**Main Menu**

- Home
- Joomla! License
- News
- Blog
- Links
- Contact Us
- Search
- News Feeds
- FAQs
- Wrapper
- Joomla! Home
- Joomla! Forums
- OSM Home
- Administrator
- Login Form

Uživatelské jméno

Heslo

Zapamatovat

**Přihlášení**

Zapomenuté heslo  
Nemáte účet? Vytvořte jej!

**Syndicate**

0.91

1.0

**Newsflash**

Aoccdrnig to rscheearch at an Elingsh uinervtisy, it doesn't mttar in waht oređr the lteers in a wrod are, the olny iprmoetn thing is taht frist and last lteer is at the right pclae. The rset can be a toalt mses and you can still raed it wouthit porbelm. This is bcuseae we do not raed ervey lteer by itself but the wrod as a wlohe.

**Welcome to Joomla!**

Napsal Web Master  
Saturday, 12 June 2004

If you've read anything at all about Content Management Systems (CMS), you'll probably know at least three things: CMS are the most exciting way to do business, CMS can be really, I mean *really*, complicated and lastly Portals are absolutely, outrageously, often *unaffordably* expensive.

**Sample Image**

Example Caption

Aktualizováno ( Saturday, 12 June 2004 )  
Celý článek...

**Newsflash 1**

Napsal Administrator  
Monday, 09 August 2004

Joomla! 1.0 - 'Experience the Freedom!'. It has never been easier to create your own dynamic site. Manage all your content from

**Newsflash 2**

Napsal Administrator  
Monday, 09 August 2004

Yesterday all servers in the U.S. went out on strike in a bid to get more RAM and better CPUs. A spokes person said that the

**Polls**

**This Joomla! installation was ...**

- Absolutely simple
- Reasonably easy
- Not straight-forward but I worked it out
- I had to install extra server stuff
- I had no idea and got my friend to do it
- My dog ran away with the README ...

**Hlasovat**

**Výsledky**

**Who's Online**

Právě zde jsou  
Hosté : \$guest\_array

After this we have all basic tools to create some ... content !

## How to create / edit the content

The point of each website is the content. The interesting informations are the magnet. There are two modes/ways how to create new content.

1. from front end (common for normal users)
2. from backend (fine for administrators, publishers)

## New content from frontend

From front end, simple login with your user name (Admin) and from „User menu“ choose item „Create new item“. A dialog will display and will guide user through the process. There is WYSIWYG JCE editor so if you can use any word processor, you can create new content. This could look as following ... including text, images, URL links, smileys etc.

We have 3 part of content dialog:

1. Subject
2. Intro text
3. Body
4. Publish parameters

The subject item is clear to use, everyone are using email client ? :-)

The intro text is short description of content and is displayed using „blog“ list format.

Body of text is shown only when activating „Read more“ link

Publish parameters can hold some meta tags, author names and direct to show/hide on front page of the website. Lets look at some pictures ...

- the subject and intro text

Název:

Test CZ znaků



Kategorie:

Latest News

Úvodní text (Povinné):

- the body text

Publish parameters

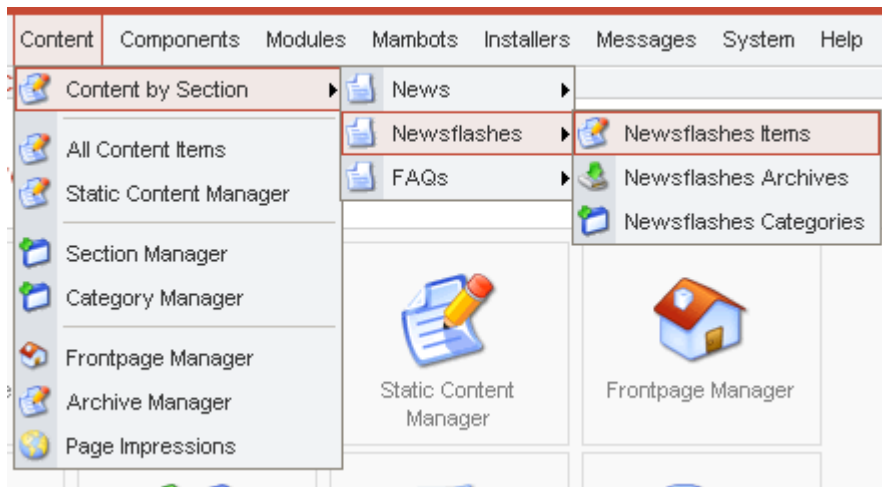
are used to set „publish on homepage“, enter date of valid from - to, meta tags etc.



Obrázky	Zveřejnění	Metadata
Stav:	<b>Zveřejnit</b> ▼	
Přístupová úroveň:	<b>Public</b> Registered Special	
Alias autora:	<input type="text"/>	
Třídění:	Nové položky na začátek, jako výchozí	
Zveřejnit od:	<input type="text" value="2006-09-15"/> ...	
Zveřejnit do:	<input type="text" value="Never"/> ...	
Zveřejnit na Hlavní straně:	<input checked="" type="checkbox"/>	

## New content from backend

To add/modify/delete content from backend (e.g. being an administrator) user have to login to backend interface and go to specific content category/section defined before entering new text.



This is the way where and how to delete or unpublish any content from website. Simple choose an item from list and use „Trash“, „Edit“, „Unpublish“, „Move“ or „Copy“ functions.

A screenshot of the Joomla! Content Items Manager interface. The page title is 'Content Items Manager [ Section: Newsflashes ]'. The interface shows a table of content items with columns for #, Title, Published, Front Page, Reorder, Order, Access, ID, Category, Author, and Date. There are three items listed: Newsflash 1, Newsflash 2, and Newsflash 3. The interface also includes a toolbar with icons for Archive, Publish, Unpublish, Move, Copy, Trash, Edit, New, and Help. A filter box is present, and the page shows 'Display # 30 Results 1 - 3 of 3'. At the bottom, there is a footer with the Joomla! logo and version information: 'Joomla! 1.0.10 Stable [ Sundown ] 26 June 2006 00:00 UTC'.

**Well, it is Joomla!**

**the fast guide for Warpstock CZ 2006**



Hope, our OS2.cz portal will switch to some CMS so all of us can create new manuals, redbooks, how-to texts ...

**So ! Let's Joomla!**

List of resources and web links:

Czech Joomla! group – news, support portal  
Official Joomla! website  
Extensions and plugins  
Free templates

[www.joomla.cz](http://www.joomla.cz)  
[www.joomla.org](http://www.joomla.org)  
[extensions.joomla.org](http://extensions.joomla.org)  
[www.joomladesigns.co.uk](http://www.joomladesigns.co.uk)  
[www.ty2u.com](http://www.ty2u.com)  
[www.compassdesigns.net](http://www.compassdesigns.net)